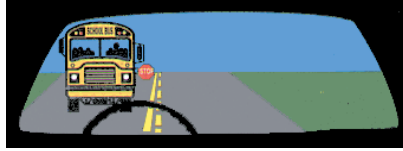


# STOP: It's the Law!

## Tennessee School Bus Stop Law

### Meeting A School Bus:

Any driver meeting a school bus or church bus on which the red stop warning signal lights are flashing should reduce his speed and bring the vehicle to a complete stop while the bus stop signal arm is extended. The vehicle must remain stopped until the stop arm is pulled back and the bus resumes motion.



### Overtaking A School Bus:

Any driver approaching a school bus or church bus from the rear shall not pass the bus when red stop warning signal lights are flashing. The vehicle must come to a complete stop when the bus is stopped. The vehicle must remain stopped until the stop arm is pulled back and the bus resumes motion.



### School Bus Warning Lights:

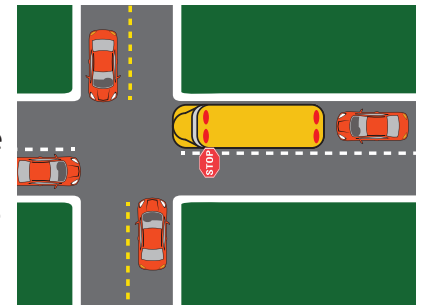
It is illegal to pass a school bus that has stopped to load or unload students. Never pass on the right side of the bus, as this is where the children enter or exit.

This is illegal and can have tragic results. You must stop and remain stopped until:

- The bus has started moving, OR
- The driver motions for you to proceed, OR
- The visual signals are no longer activated such as the red flashing lights go off and/or the stop arm is pulled back.



When a school bus is stopped at an intersection to load and unload children, drivers from ALL directions are required to stop until the bus resumes motion (as shown by the red vehicles to the right). It is a Class A misdemeanor and the driver can be fined between \$250 and \$1,000 for not stopping for a stopped school bus.



When driving on a highway with separate roadways for traffic in opposite directions, divided by median space or a barrier not suitable for vehicular traffic, the driver need not stop, but should proceed with caution.

A turn lane in the middle of a four-lane highway is NOT considered a barrier, but a fifth lane that is suitable for vehicular traffic. Drivers meeting a stopped school bus on this type of road would be required to stop in both directions.

### Sum it up

- If you are on a two-way street, drivers in both directions must stop for the bus.
- If you are on a divided highway with a left turn lane in the center, both directions of traffic must also stop for the bus.
- However, if there's a physical median in the middle of the road, one with grass or a concrete divider, only traffic on the side with the bus needs to stop. Vehicles heading in the opposite direction should still use caution.